



# Celebrating 20 Years!

*Greetings!*

Create A Smile Fundraising Committee in partnership with Community Living St. Marys & Area is celebrating 20 years of creating smiles in our community.

The 'Create A Smile' Fundraiser began 20 years ago by the Muir and Rossetti families, driven by a need that hit close to home. Our sister's teeth needed to be pulled due to their deterioration from disability related medication. Government funding was not available to support new dentures or implants; we were determined to get her smile back. This is where 'Create A Smile' began. The first event took place in Stratford and raised over \$10,000. Over the past 19 years we have managed to raise **\$279,484**. The money raised has been used to provide relief hours for parents with intellectual and physical disabilities, provide housing and living expense relief, make our community playgrounds and swimming pool more accessible and the list goes on. We are proud of the impactful strides and smiles we have made in the lives of those living with disabilities.

This annual fundraiser is fueled by the amazing generosity of volunteers, our community and businesses like yours. Not only has this event generated significant financial resources, it has also reminded us of the power of healthy communities. The money raised is used to pay for things that enhance the lives of people with disabilities, their families and the communities they live in. This year's funds raised will be used to support security of home, activities for increased participation in community events, and additional accessibility features in our community.

Did you know that people with disabilities in Canada are twice as likely to live in poverty than those without a disability? Many have an income of less than \$1,200 per month and are now facing rapidly increasing living costs and a lack of affordable housing.

*Here is how you can help us Create More Smiles...*

- 😊 Mark your calendars and join us for the walk!
- 😊 Create a Team, its always more fun with others. You can create a team on our website <https://communitylivingstmarys.ca/> and start collecting pledges [CLICK HERE](#)  
\*For those who would like a pledge sheet package, you can pick these up at the Jame Purdue Centre.
- 😊 Make a Donation on-line [CLICK HERE](https://www.canadahelps.org/en/charities/community-living-stmarys-and-area/p2p/walkathon2024/)  
<https://www.canadahelps.org/en/charities/community-living-stmarys-and-area/p2p/walkathon2024/>  
OR by calling the Community Living office at 519-284-1400



Sincerely,

Jennifer Leslie  
Executive Director,  
Community Living St. Marys & Area

The Muir Family  
Founders of 'Create A Smile'

*"A community where everyone belongs".*

Let's work together to make this vision a reality!

# SPONSORSHIP LEVELS

## BEAMING SMILE

Contribution of \$2000+

- Logo on 150+ T-shirts (Must be confirmed by April 30th)
- Opportunity to speak at the event
- Prominent logo recognition on all marketing material including our website, newspaper, event signage, Community Living newsletter)
- Social Media acknowledgment

## CONTAGIOUS SMILE

Contribution of \$500+

- Recognition during event speeches
- Company & logo recognition on event signage, newspaper and Community Living newsletter
- Social Media acknowledgment

## GENUINE SMILE

Contributions of \$100+

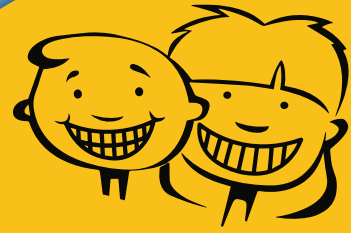
OR A business that enters a Team OR In-kind donation for Silent Auction

- Recognition on event signage and Community Living newsletter
- Social Media acknowledgment

**WE APPRECIATE YOUR PAST AND PRESENT SUPPORT OF THE  
"CREATE A SMILE" WALK AND COMMUNITY LIVING-ST.MARYS AND AREA.**

*Get in Touch to Create More Smiles Together!*

519-284-1400 | <https://communitylivingstmarys.ca> | [jleslie@clstmarys.ca](mailto:jleslie@clstmarys.ca)



### WALK DETAILS

Date: Sunday, June 2, 2024

Time: 11am to 1pm

Location: Milt Dunnell Park

("The Flats")

Scenic 5km walk/run



Tax receipts are issued for all levels of sponsorship valued at \$10.00 or more.  
Please make cheques payable to Community Living St. Marys and Area.